

1) Product main performance/产品主要性能指标:

Operating Temperature/工作温度: -55°C~125°C (不带 LED指示灯)

Relative humidity/相对湿度: 90%~95% (40±2° C)

Working voltage/工作电压: 150V

Working current/工作电流: 1.5A

Insulation resistance/绝缘电阻: 5000MΩ

Withstand voltage/耐电压: 1000V

Contact resistance/接触电阻: ≤20mΩ

Data transmission performance/数据传输性能:

带灯RJ45: Insertion loss /插入损耗: 0.4dB(100MHz)

Crosstalk /串扰: 30.1dB (100MHz)

Impedance /阻抗: 100±15Ω

2) Mechanical data/机械特性:

Connection type/连接方式: Bayonet connection/卡口连接

Vibration/振动: 10~2000Hz 147m/s²

Shock Resistance/冲击: 490m/s²

Salt Spray Corrosion/盐雾: 96hr

Endurance (Shell)/机械寿命: 500

3) Other Specification/其它规格:

Solder cup/焊线杯: Tin bronze plating/锡青铜镀金

Housing Material/外壳材质: Aluminum alloy electroless plating

dark nickel/铝合金镀化学哑镍

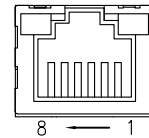
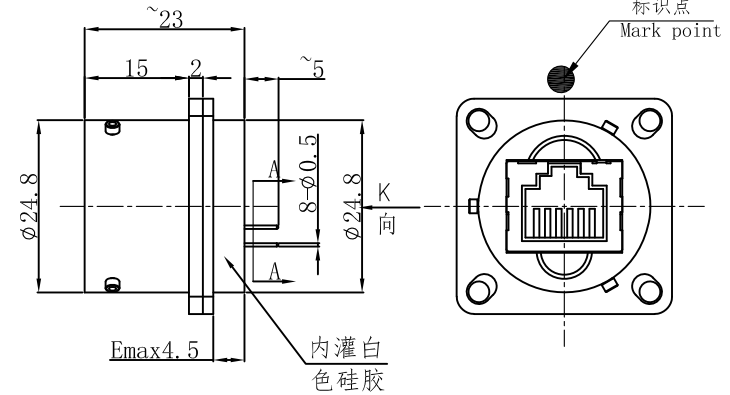
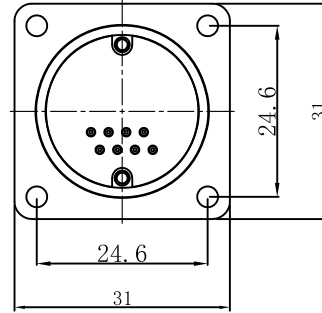
Card pin material/卡销材质: SUS316 /不锈钢316

Insulator material/绝缘材料: PPS

IP Rating/防护等级: IP68 (Interpolation state/插合状态)

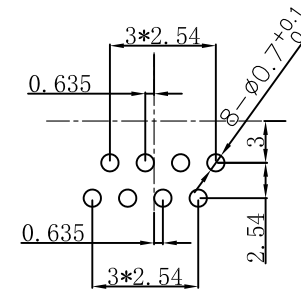
*ALL MATERIALS ARE RoHS COMPLIANT/所有材料均符合RoHS要求

REV/版本	DESCRIPTION/变更内容	DATE/日期	DRAWN BY/绘图
A2	“暗镍”改成“哑镍”	2024.07.19	Z02

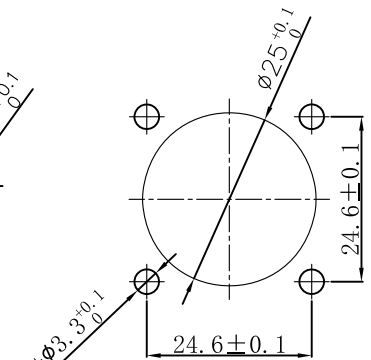


View k
K向孔位排列

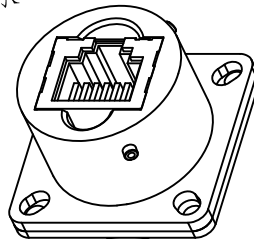
Pin definition/引脚定义		
1	TX+	A -
2	TX-	B +
3	RX+	C -
4	N/C(空脚)	D +
5	N/C(空脚)	
6	RX-	
7	N/C(空脚)	
8	N/C(空脚)	




PCB开孔尺寸 (A-A)



Mounting plate opening size
面板安装开孔尺寸



TOLERANCES UNLESS OTHERWISE SPECIFIED: 未标注尺寸公差:		THIRD ANGLE PROJECTION		Product name/产品名称	
.x ±0.5	x.' ±1.0'	SIZE: A4	UNITS: mm	板接插座/Socket	
.xx ±0.2	x.' ±0.5'	SCALE: 1: 1	SHEET: 1 OF 1		
DRAWN BY: 绘图:		DATE/日期:		QM NO 料号	REV/ 版本
Z02		2024.07.19		YW120Fm01B	
CHECKED BY: 审核:		DATE/日期:		DRAWING NO 图号	A2
PD05		2024.07.19		CUSTOMER NO 客户料号	
APPROVED BY: 核准:		DATE/日期:		 QM(Quanna) Connector Shenzhen Co. LTD 深圳市全马连接器有限公司	
PD03		2024.07.19			