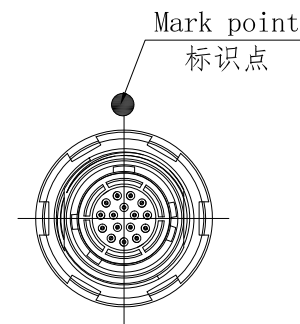
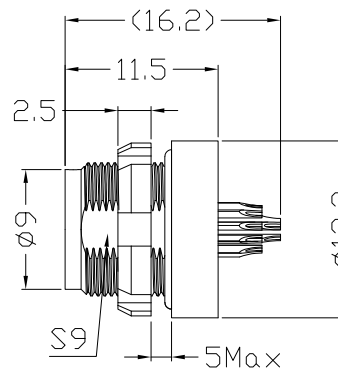


REV/版本	DESCRIPTION/变更内容	DATE/日期	DRAWN BY/绘图
A1	NEW DRAWING	2024-8-2	Z01

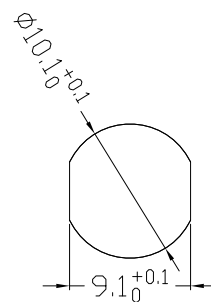
1. Product main performance/产品主要性能指标:

Operating Temperature/工作温度: $-55^{\circ}\text{C} \sim 125^{\circ}\text{C}$
Humidity(max)/最大潮湿: $\leq 95\%$ [at 60 deg C / 140 F]
Shielding /屏蔽性能: 75dB(10MHz) 40dB(1GHz)
Salt Spray Corrosion/盐雾: 96hr
P op (max)/最大环境压力: 60 bar (870 psi)
Insert Configuration/针芯配置: 0G.316 16Low Voltage
Pin Size/接触件直径: $\phi 0.3\text{mm}$
R (Max)/接触电阻: $\leq 20\text{m}\Omega$
Insulation resistance/绝缘电阻: 5000M Ω
Withstand voltage/耐电压: 500V
Rated Current/额定电流: 1.0A
Cable AWG/电缆规格: 16*28AWG



2. Mechanical data/机械特性:

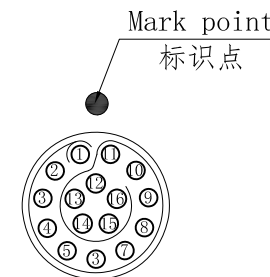
Vibration/振动: 15g[10Hz~2000Hz]
Shock Resistance/冲击: 100g[6ms]
Endurance (Shell)/机械寿命: 5000次



Panel cut-outs
建议安装开孔尺寸

3. Other Specification/其它规格:

Contact PIN/接触件: Gold plated Tin bronze/锡青铜镀金
Housing Material/外壳材质: Gun color plated brass/铜镀枪色
Nut、screw/螺母、螺丝: Gun color plated brass/铜镀枪色
Other metal spare parts/其余金属件: Gold plated brass/铜镀金
Glue filling type/灌胶类型: Transparent epoxy resin/透明环氧树脂
Insulator material/绝缘材料: PPS
IP Rating/防护等级: IP68(头座插合)



View k
K向孔位排列

*ALL MATERIALS ARE RoHS COMPLIANT/所有材料均符合RoHS要求

TOLERANCES UNLESS OTHERWISE SPECIFIED: 未标注尺寸公差: ± 0.1 未标注角度公差: $\pm 0.5^{\circ}$	First ANGLE PROJECTION	Product name/产品名称	
	SIZE: A4 UNITS: mm SCALE: 1: 1 SHEET: 1 OF 1	0G-ZLA固定式插座	
DRAWN BY: 绘图: Z01	DATE/日期: 2024-8-2	QM NO 料号 ZLA. 0G. 316. GLA	REV/ 版本
CHECKED BY: 审核: PD05	DATE/日期: 2024-8-2	DRAWING NO 图号 CUSTOMER NO 客户料号	A2
APPROVED BY: 核准: PD03	DATE/日期: 2024-8-2	 QM(Quanma) Connector Shenzhen Co. LTD 深圳市全马连接器有限公司	