

1) Product main performance/产品主要性能指标:

Operating Temperature/工作温度: $-55^{\circ}\text{C}\sim 150^{\circ}\text{C}$
 Humidity(max)/最大潮湿: $<95\%$ [at 60 deg C / 140 F]
 Shielding /屏蔽性能: 75dB(10MHz) 40dB(1GHz)
 Salt Spray Corrosion/盐雾: 96hr

Mechanical data/机械特性:

Vibration/振动: 15g[10Hz~2000Hz]
 Shock Resistance/冲击: 100g[6ms]
 Endurance (Shell)/机械寿命: 5000+

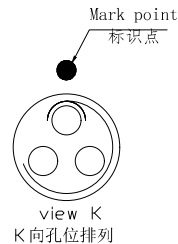
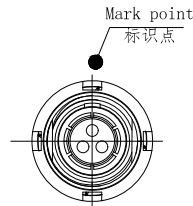
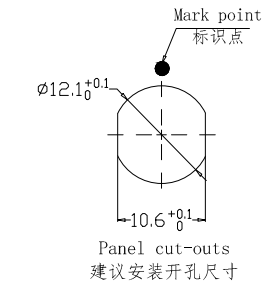
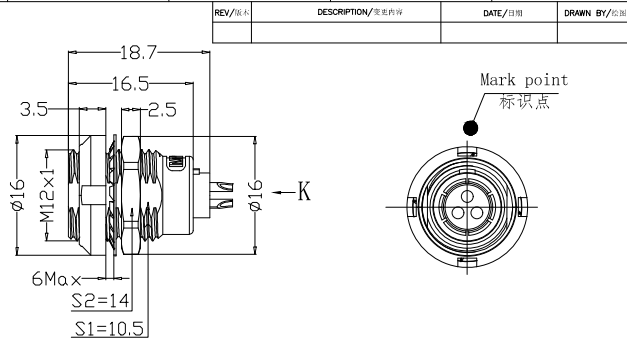
2. 电气性能

Insert Configuration/针芯配置: 1BP. 303 3Low Voltage
 Pin Size/接触件直径: $\phi 1.3\text{mm}$
 Contact resistance接触电阻: $\leq 5\text{m}\Omega$
 Insulation resistance/绝缘电阻: 5000M Ω (测试电压500V(DC))
 Withstand voltage/耐电压: 1300V(AC)
 Rated working current额定工作电流: 12.0A

Other Specification/其它规格:

Contact PIN/接触体: Gold plated Tin bronze/锡青铜镀金
 Housing Material/外壳材质: PEEK
 Other Shell Material/其它壳体材质: 铜镀镍
 Insulator material/绝缘体材料: PPS
 IP Rating/防护等级: IP50

*ALL MATERIALS ARE RoHS COMPLIANT/所有材料均符合RoHS要求.



DRAWN BY: 绘图: P003	2024.05.28		美易连电子科技(深圳)有限公司 Meiyilian electronic technology(shenzhen)Co.,Ltd.								
CHECKED BY: 审核: Z01	2024.05.28		<table border="1" style="width: 100%; border-collapse: collapse;"> <tr> <td style="width: 15%;">单位 UNIT: mm</td> <td style="width: 15%;">名称 PART NAME</td> <td style="width: 70%;">ZCG-1BP 双螺母插座</td> </tr> <tr> <td>比例 SCALE: 1: 1</td> <td>型号 PART NAME</td> <td>ZCG. 1BP. 303. KWLL</td> </tr> </table>			单位 UNIT: mm	名称 PART NAME	ZCG-1BP 双螺母插座	比例 SCALE: 1: 1	型号 PART NAME	ZCG. 1BP. 303. KWLL
单位 UNIT: mm	名称 PART NAME					ZCG-1BP 双螺母插座					
比例 SCALE: 1: 1	型号 PART NAME	ZCG. 1BP. 303. KWLL									
APPROVED BY: 核准: P005	2024.05.28	<table border="1" style="width: 100%; border-collapse: collapse;"> <tr> <td style="width: 15%; text-align: center;"> </td> <td colspan="2" style="text-align: center;">FIRST ANGLE PROJECTION</td> </tr> <tr> <td>REV/版本</td> <td>A1</td> <td>SHEET: 1 OF 1</td> </tr> </table>				FIRST ANGLE PROJECTION		REV/版本	A1	SHEET: 1 OF 1	
	FIRST ANGLE PROJECTION										
REV/版本	A1	SHEET: 1 OF 1									
GENERAL TOLERANCE (UNLESS SPECIFIED)		<table border="1" style="width: 100%; border-collapse: collapse;"> <tr> <td style="width: 15%; text-align: center;"> </td> <td colspan="2" style="text-align: center;">FIRST ANGLE PROJECTION</td> </tr> <tr> <td>REV/版本</td> <td>A1</td> <td>SHEET: 1 OF 1</td> </tr> </table>				FIRST ANGLE PROJECTION		REV/版本	A1	SHEET: 1 OF 1	
	FIRST ANGLE PROJECTION										
REV/版本	A1	SHEET: 1 OF 1									
$\leq 10 \pm 0.1$ $< 10^{\circ} \leq 20 \pm 0.15$ $< 20^{\circ} \leq 30 \pm 0.3$ AngLe $\pm 1^{\circ}$		名称 PART NAME ZCG-1BP Double nut socket									
型号 PART NAME ZCG. 1BP. 303. KWLL											