

1. Product main performance/产品主要性能指标:

Operating Temperature/工作温度:  $-55^{\circ}\text{C} \sim 150^{\circ}\text{C}$   
 Humidity(max)/最大潮湿:  $\leq 95\%$  [at 60 deg C / 140 F]  
 Shielding /屏蔽性能: 75dB(10MHz) 40dB(1GHz)  
 Salt Spray Corrosion/盐雾: 96hr

Mechanical data/机械特性:

Vibration/振动: 15g[10Hz~2000Hz]  
 Shock Resistance/冲击: 100g[6ms]  
 Endurance (Shell)/机械寿命: 5000+  
 Cable/配接电缆:  $\phi 10.1\text{mm} - \phi 11.0\text{mm}$

2. 电气性能

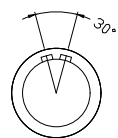
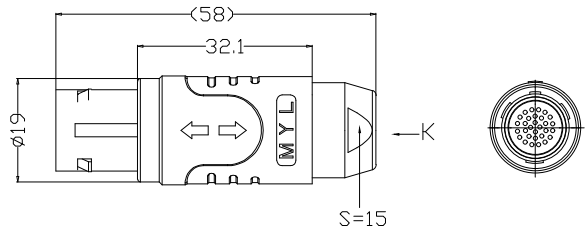
Insert Configuration/针芯配置: 3BP. 330 30Low Voltage  
 Pin Size/接触件直径:  $\phi 0.7\text{mm}$   
 Contact resistance接触电阻:  $\leq 4.5\text{m}\Omega$   
 Insulation resistance/绝缘电阻: 5000M $\Omega$  (测试电压500V(DC))  
 Withstand voltage/耐电压: 800V(AC)  
 Rated working current额定工作电流: 3.5A

Other Specification/其它规格:

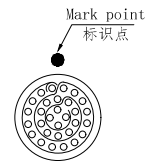
Contact PIN/接触体: Gold plated Tin bronze/锡青铜镀金  
 Housing Material/外壳材质: PEEK  
 Other Shell Material/其它壳体材质: 铜镀镍  
 Insulator material/绝缘体材料: PEEK  
 IP Rating/防护等级: IP50

\*ALL MATERIALS ARE RoHS COMPLIANT/所有材料均符合RoHS要求.

| REV/版本 | DESCRIPTION/变更内容 | DATE/日期 | DRAWN BY/绘制 |
|--------|------------------|---------|-------------|
|        |                  |         |             |



Plug front view  
插头前视图



view K  
K向孔位排列

|  |  |                |                   |                         |  |
|--|--|----------------|-------------------|-------------------------|--|
| DRAWN BY:<br>绘图: P003 2024.05.28<br>CHECKED BY:<br>审核: Z01 2024.05.28<br>APPROVED BY:<br>核准: P005 2024.05.28   | 美易连电子科技(深圳)有限公司<br>Meiyilian electronic technology(shenzhen)Co.,Ltd. |                | 单位<br>UNIT: mm    | 名称<br>PART NAME         | TG-3BP直式插头(不带护套式尾帽)<br>TG-3BP Straight Plug<br>(without jacketed tail cap) |
|  |  |                | 比例<br>SCALE: 1: 1 |                         |  |
| GENERAL TOLERANCE<br>(UNLESS SPECIFIED)<br>$\leq 10 \pm 0.1$<br>$< 10^{\circ} \leq 20 \pm 0.15$<br>$< 20^{\circ} \leq 50 \pm 0.3$<br>Angle $\pm 1^{\circ}$ | FIRST ANGLE PROJECTION   | 尺寸<br>SIZE: M4 | 型号<br>PART NAME   | TGA. 3BP. 330. KWKAD112 |  |
|  |  | REV/版本 A1      |                   |                         | SHEET: 1 OF 1  |